



# 5-Year Plan (2017 to 2021) Kittitas County Conservation District

For More Information Contact: Anna Lael, 509-925-3352, a-lael@conserveva.net



## Organization of the Kittitas County Conservation District

A political subdivision of the State of Washington – authorities, powers and structure contained in RCW 89.08.

- *In 1939, the State Soil Conservation District Law was passed by the Washington State Legislature. There was widespread support in the Kittitas Valley for a conservation district that resulted in the establishment of the Kittitas Conservation District in 1942. By 1947, landowners in northern Kittitas County established the Cle Elum Conservation District. In 1962, the Kittitas and Cle Elum Conservation Districts were combined to form the Kittitas County Conservation District (KCCD).*

## Function of the Kittitas County Conservation District

- *To make available technical, financial and educational resources, whatever their source, and focus or coordinate them so that they meet the needs of the local land manager with conservation of soil, water and related natural resources.*

## Who We Serve & Why

- *We serve the citizens of our community (county, state, country) to ensure the long-term use of natural resources in an economically, socially and environmentally sustainable manner using non-regulatory, voluntary approaches.*

## Mission Of The Kittitas County Conservation District

- *Provide leadership, technical, educational and financial assistance to landowners and land users in their utilization and management of natural resources.*

## Vision of the Kittitas County Conservation District

- *The Kittitas County Conservation District is recognized by all private landowners as a source of financial, technical and educational assistance in Kittitas County; and by local, state and federal authorities as the organization of choice to implement on-the-ground stewardship activities.*

## Values of the Kittitas County Conservation District

*The Kittitas County Conservation District respects and honors both private and public lands, as well as resources and people. We demonstrate this by valuing:*

- *Integrity and Honesty*
- *Innovative approaches and new ideas*
- *Serving those that voluntarily engage us*
- *Fiscal and public responsibility*
- *Locally-led, economically sustainable resource conservation*
- *On the ground, science-based solutions*
- *Stewardship for our properties/resources*
- *Sustainability – meaning implementation of economically and environmentally sound and socially acceptable conservation practices*
- *Strong partner relationships with government, nongovernment and tribal entities for efficient and effective program delivery*

## Natural Resource Data & Information:

*The Kittitas County Conservation District (KCCD) includes 1,492,163 acres in the center of Washington State stretching from the crest of the Cascades to the shores of the Columbia River. The only incorporated community in Kittitas County that is included within the KCCD boundaries is the City of Cle Elum. Cle Elum is a community of nearly 1900 residents in northern Kittitas County.*

*The area within the KCCD boundaries can be divided into the following land types:*

Type	Acres	Percent of Total
Range and Non Irrigated	498,734	33.4%
Irrigated Cropland	138,886	9.3%
Forestland	828,261	55.5%

Lakes	24,050	1.6%
Incorporated (Cle Elum)	2,232	0.1%

Approximately 400,000 acres are privately owned and managed in the KCCD including essentially all of the irrigated lands, 40% of the range/non irrigated lands and a little more than 10% of the forestlands. The remaining lands and the largest area is owned by state and federal agencies who manage more than 72% of the land base. The dominate agencies are:

- **USDA Forest Service** - 463,170 acres primarily in the western half of the KCCD
  - Includes 51,570 acres of the Snoqualmie National Forest, 61,350 acres of the Alpine Lakes Wilderness, and 350,250 acres of the Wenatchee National Forest
- **US Army Yakima Training Center** – 153,000 acres in the southeast part of the KCCD
- **US Bureau of Land Management** – 24,420 acres
- **Washington Department of Natural Resources** - 207,010 acres
- **Washington Department of Fish & Wildlife** - 203,580 acres
- **Washington State Parks** - 8,600 acres

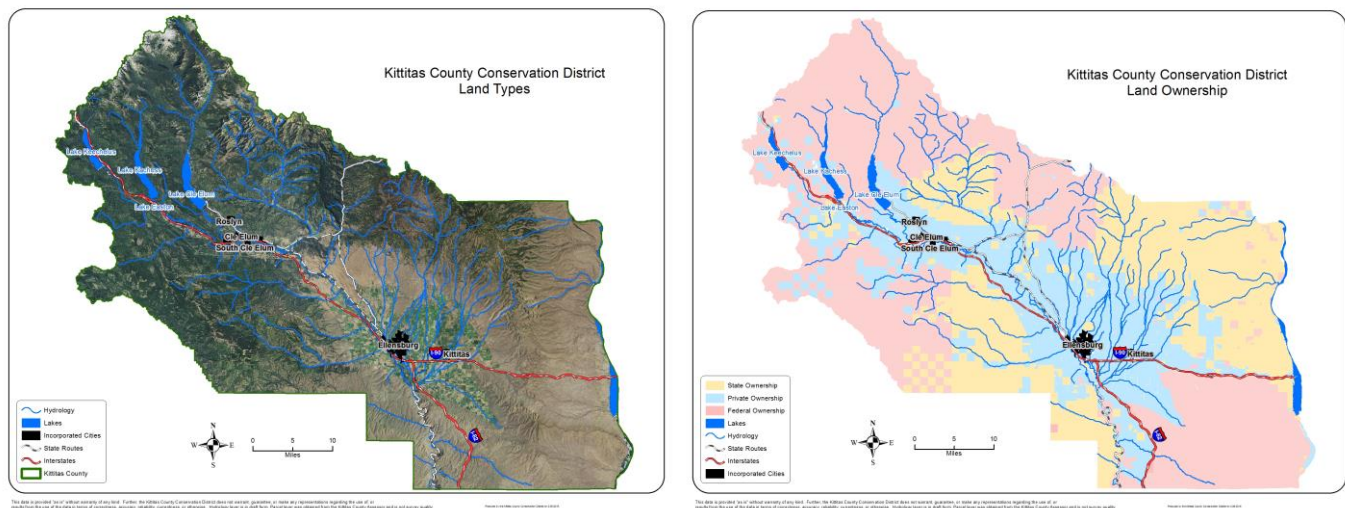


Figure 1. Maps of the Kittitas County Conservation District display the land types and landownership. On the left, is a map and aerial photo of the District. The forestlands dominate the western half of the District, while rangeland dominates the eastern half. The irrigated lands are in the Kittitas Valley and clustered along the Yakima and Teanaway Rivers in the northern portion of the District. On the right, the map displays landownership, differentiating between private, state and federal lands. Federal ownership is primarily the USDA Forest Service in the western half of the District and the US Army Corps of Engineers in the southeastern portion. State lands include the Naneum and Colockum units in the northeast, the LT Murray unit in south central and the Teanaway Community Forest in the northwest.

The KCCD's focus is on creating and maintaining resilient landscapes across Kittitas County. This effort addresses natural resource concerns and priorities detailed below. Most of the KCCD programs work across these resource concerns, as resilient landscapes are not limited to a single resource issue or concern.

### Water Quantity

Drought resiliency and efficient use of irrigation water is the highest priority in Kittitas County. Nearly all streams are over allocated, creating low flows both to supply irrigation needs and support resident and anadromous fisheries as well as streamside and floodplain vegetation. The [Kittitas Reclamation District \(KRD\)](#), encompassing 59,000 acres, is prorated during water short years. Cascade Irrigation District, Ellensburg Water Company, Westside Irrigating Company and other smaller water purveyors may have non-pro-ratable rights, but they depend highly on return flows from KRD and so are also significantly impacted in water short seasons. Water use efficiency is a high priority of the USDA Natural Resources Conservation Service (NRCS) who's [2012 State Resource Assessment](#) ranked "Insufficient Water - Inefficient use of irrigation water" the number one priority in the Central area. The [Irrigation Efficiencies Program](#) has resulted in 4655 acre-feet placed in the [Washington Trust Water Rights Program](#) in 11 streams across the KCCD since 2002. The Yakima River Basin Integrated Water Resource Management Plan ("Integrated Plan") was developed and is being implemented by [US Bureau of Reclamation](#) and the

[Washington State Department of Ecology](#) in conjunction with the Yakama Nation and Yakima River basin stakeholders (including the Kittitas County Conservation District). The Integrated Plan's benefits include "Providing more water for stream flows that fish need to survive" and "Providing greater water supply reliability for farmers and communities." [Trout Unlimited](#) and [Washington Water Trust](#) are working with KCCD and [NRCS](#) to develop projects with water right holders improving on-farm efficiency and/or selling a portion or all of their instream water right.

### **Water Quality**

More than 700 miles of streams and rivers flow through forestland, rangeland, irrigated agricultural lands and urban lands in Kittitas County. Water quality is important in these waterways to ensure public health, provide irrigation water, and for salmonids and resident fish species as well as upland wildlife species. Water quality degradation is a Priority Resource Concern in the [2012 State Resource Assessment](#). The assessment describes both sediment and nutrients in ground water and surface water in crop, forest and other associated agricultural lands. In Kittitas County, the water quality degradation- "excessive sediment" priority involves 63,500 acres and the "excessive nutrients" involves 15,000 acres, within the 63,500 acres. In addition, the Department of Ecology is responsible for several [Water Cleanup Plans \(TMDLs\)](#) addressing chlorine, ammonia-N, BOD (5-day), fecal coliform/bacterial contamination, temperature; organochlorine pesticides, suspended sediments, and turbidity. [WSU Extension Kittitas County](#) is working to provide assistance to producers regarding water quality and livestock management in order to protect and improve water quality by reducing the potential for bacterial contamination. They have produced a [water quality risk assessment tool](#) that explains the relationships among livestock grazing effects, riparian condition, and surface water quality and helps farmers determine the relative risk of negatively affecting water quality. The KCCD and [NRCS](#) are working with irrigated agriculture producers to assist with conversions to more efficient irrigation systems thereby reducing the potential water quality impacts of tailwater on rill irrigated lands. The [Kittitas County Water Purveyors](#) works to monitor water quality in canals and streams across Kittitas County providing important data. [Mid-Columbia Fisheries Enhancement Group](#), [Kittitas Conservation Trust](#), [Kittitas County Flood Control Zone District](#) and the [Yakama Nation](#) are implementing habitat projects that - address water quality as well.

### **Fish & Wildlife**

Species that are listed under the federal Endangered Species Act (ESA) or listed by Washington State as threatened or endangered or species of concern are priority resource issues. Mid-Columbia Summer Steelhead, Bull Trout, and Greater Sage Grouse are all listed as threatened species under ESA and by the State. The Gray Wolf is listed as endangered under ESA and by the State. NRCS's 2012 State Resource Assessment identifies "Inadequate Habitat for Fish and Wildlife" as a priority resource concern in the state, including Kittitas County. The [2009 Yakima Steelhead Recovery Plan](#) was written locally and was formally incorporated into NOAA's Middle Columbia River Steelhead Recovery Plan (2009). The [Yakima Bull Trout Action Plan](#), September 2012, complements and supports the pending US Fish & Wildlife Service Bull Trout Recovery Plan by providing detailed population information and proposing actions to benefit bull trout in the Yakima basin. The [Yakima Tributary Access & Habitat Program](#) has been working on fish passage and fish screen projects since 2003. The KCCD is a founding member of the Core Team and a major project sponsor. Base funding is provided through the [Bonneville Power Administration](#) via the [South Central Washington Resource Conservation and Development Council](#) and matched primarily through the [Salmon Recovery Funding Board](#), Ecology, and local partners. The Yakima Basin Integrated Plan includes the goals of "Protecting over 200,000 acres of currently unprotected forest, shrub steppe, and river habitat" and "Enhancing habitat along the Yakima River and its tributaries" an effort intended to benefit fish and wildlife. In Kittitas County, the 50,000 acre [Teaway Community Forest](#) was purchased by Washington State under the Integrated Plan. [The Nature Conservancy](#) purchased 47,921 acres from Plum Creek representing the Conservancy's largest land acquisition ever in the state. Significant opportunities are now open on a landscape scale to work with land managers, landowners, and community to address fish and wildlife and forest health. Other KCCD partners also working to address fish recovery goals include the [Yakama Nation](#), [Mid-Columbia Fisheries Enhancement Group](#), [Kittitas Conservation Trust](#), and the [Kittitas County Flood Control Zone District](#). The [South Central Washington Shrub Steppe/Rangeland Partnership](#) is also focusing on Sage Grouse habitat in a 2.7-million-acre landscape that includes eastern and southern Kittitas County.



## **Soil Quality & Health**

Soil quality and health impacts agricultural production, particularly in the 90,000 acres of irrigated crop and pastureland in Kittitas County. Soil quality, including nutrients and the prevention of soil erosion are important resource concerns. The NRCS 2012 State Resource Assessment identified soil erosion (“sheet, rill and wind erosion”) as the number one resource concern in the state and the Central area ranked it the #2 priority resource concern. The [NRCS](#) and [WSU Extension Kittitas County](#) are also working on soil erosion and nutrient concerns, as is the [Organization of Kittitas County Timothy Hay Growers & Suppliers](#).

## **Forest Health**

Fuel loads, insect damage and development into the wildland urban interface in combination with topography and the weather patterns have created substantial resource concerns in forestland as documented in the [Kittitas County Wildfire Protection Plan](#) (2009). Approximately 75,000 acres of high to extreme fire hazard areas are identified on private lands in that plan. In addition, the NRCS 2012 State Resource Assessment identified “undesirable plant productivity and health”, “degraded habitat condition”, “excessive plant pest pressure”, and “wildfire hazard, excessive biomass accumulation” on forestland as priority resource concerns. The [NRCS](#), [Washington Department of Natural Resources](#), [Washington Fire Adapted Community Learning Network](#), local fire districts and [Kittitas County](#) are working on these issues as well. Home sites and communities within the wildland urban interface are of particular focus and efforts are necessary to establish [fire adapted communities](#) who accept fire as part of the natural landscape and work to improve the resiliency of the landscape. Collaboration with [Teanaway Community Forest Advisory Committee](#) is underway to assist with grazing and water quality concerns, as well as habitat restoration opportunities, both of which crossover into the Water Quality and Fish & Wildlife concerns as well.

## **Range Health**

Rangelands provide a diversity of ecosystems and also provide a diverse and significant economic benefits. Livestock grazing occurs on private and state owned range areas. NRCS’s 2012 State Resource Assessment identified “undesirable plant productivity and health”, “degraded habitat condition”, and “excessive plant pest pressure” on rangeland as priority resource concerns. The [NRCS](#), [WSU Extension Kittitas County](#), [Washington Department of Natural Resources](#), [Washington Department of Fish & Wildlife](#), and [Kittitas County Noxious Weed Control Board](#) are working to assist with range monitoring as well as providing technical and/or financial assistance to landowners and users.

---

## **Criteria for Selecting Conservation Priorities:**

- Documented assessments and data indicating the specific conservation need
- Impact on the long term sustainability of agriculture
- Available funding to address the conservation needs
- Ability to assist landowners and managers with regulatory compliance
- Opportunities to partner and leverage resources and funding to address multiple resource concerns

---

## **Priority Natural Resource Conservation Needs & Geographic Areas, Measures of Success and Goals:**

- **Water Quantity** – Improve water use efficiency through conservation measures and storage opportunities to meet needs of water users and work with partners, to achieve base flows in high priority streams by 2021.
- **Water Quality** - Meet the Total Maximum Daily Load (TMDL) goals in Kittitas County.
- **Fish & Wildlife** - By 2021, complete installation of approved fish screen and fish passage facilities for the identified high priority areas. By 2025, complete installation of approved fish screen and fish passage facilities for the identified medium priority areas.
- **Development & Natural Resource Impacts**- Continue to assess land use fragmentation & small parcel impact on natural resources in irrigated, non-irrigated, range and forestlands and provide information/education and small project education/technical assistance to 100 landowners per year.
- **Soil Quality & Health**- Maintain soil productivity and health to meet or exceed NRCS soil quality criteria.
- **Range Health**- By 2021, document positive trend (health) on rangeland in Kittitas County.
- **Forest Health**- By 2021, treat 3,000 acres to improve forest health and reduce wildland fire risks.

---

## **Information – Education & District Operations Priorities, Measures of Success, and Goals:**

- *Education Goal: Provide educational opportunities for students (K-12), landowners, land managers and the general public regarding natural resource priorities and improving landscape resiliency.*
  - *Measures of success:*
    - *Annually, reach 80% of landowners/users in Kittitas County through a website, quarterly newsletters, workshops, public meetings and field days;*
    - *Annually, reach at least 50% of students (K-12) in Kittitas County by supporting Ag Day each March and specific classroom curriculum ([Wheat Week](#), [Water on Wheels](#), and [Salmon in the Classroom](#)) and developing new local programs based on successful programs in other areas (e.g. [Kids in the Creek](#)).*
- *KCCD Operations Goal: Maintain capacity to deliver programs that meet the needs of landowners and resource users and sustain the reputation for being a locally led problem solving group.*
  - *Measures of Success:*
    - *Annually achieve high Good Governance (or equivalent) rating with the Washington State Conservation Commission*
    - *Complete long range, annual and other planning efforts as necessary, including an emergency/disaster response plan*
    - *Successfully complete all necessary audits*
    - *Secure at least \$250,000 in new grant funds annually for on-the-ground activities with landowners/land managers*
    - *Maintain and increase staff technical certifications (conservation planners, professional engineer, GIS Specialist, etc.) through the Technical Professional Development Work Group and other available training opportunities*
    - *Maintain KCCD facilities for long term financial stability.*

---

## **Land Manager Needs**

- *Technical assistance*
  - *Improved drought resiliency*
    - *On-farm irrigation improvement plans and designs*
    - *Irrigation delivery system plans and designs*
    - *Develop opportunities to improve water management for on-farm and instream purposes*
  - *Fish screen and fish passage assessment and design*
    - *Provide engineering and design assistance to address unscreened diversions and fish passage barriers*
  - *Promoting fire resiliency in forests and communities*
    - *Assistance achieving/maintaining Firewise USA Community status*
    - *Assistance with Fire Adapted Community designation*
  - *Livestock and pasture management*
    - *Assistance to landowners/users to address water quality, forage and soil health on grazed lands*
  - *Large project facilitation using Coordinate Resource Management (CRM) principles*
    - *Empower stakeholders to form local coalitions that make natural resource decisions by consensus, leading to effective solutions with strong local support*
  - *Natural resource disaster recovery*
    - *Assist landowners impacted by disasters like flood or fire with recovery efforts (erosion control, seeding, etc.)*
- *Financial Assistance (construction or cost share funds)*
  - *On-farm improvements (e.g. irrigation efficiency upgrades)*
  - *Fish screen installation and fish passage barrier correction/removal*
  - *Grazing and livestock improvements (e.g. fencing, spring development)*
  - *Forest health/fuels reduction activities*
  - *Disaster recovery efforts*

## Milestones, Timeline & 12-Month Actions for Priority Natural Resource Conservation Needs

### Priority: Water Quantity

**Measurable Goal:** *Improve water use efficiency through conservation measures and storage opportunities to meet needs of water users and work with partners, to achieve base flows in high priority streams by 2021.*

Milestones	Timeline	12 Month Actions
<b>Construct irrigation system conversion projects</b>	July 2016 to June 2017	Complete at least two large projects to convert to sprinkler irrigation system and secure water savings for instream flow. Continue Small Project Cost Share program with priority emphasis on sprinkler conversion projects.
<b>Develop on-farm efficiencies projects</b>	July 2016 to June 2017	Work with partners (USDA NRCS, Washington Water Trust and Trout Unlimited) to develop additional on-farm projects (sprinklers, pipelines, etc) that secure water for instream flow and/or improves drought resiliency for water users.
<b>Coordinate with Yakima Basin Integrated Water Resource Management Plan</b>	July 2016 to June 2017	Attend meetings and monitor activities under the Integrated Plan to identify opportunities to partner with other stakeholders (e.g. Kittitas Reclamation District) and for funding to implement KCCD priorities.
<b>Monitor Manastash Creek flows</b>	July 2016 to June 2017	Continue to assist with monitoring of stream flows in Manastash Creek, including the water diverted & Trust Water.

### Priority: Water Quality

**Measurable Goal:** *Meet the Total Maximum Daily Load (TMDL) goals in Kittitas County.*

Milestones	Timeline	12 Month Actions
<b>Coordinate with the groups/agencies currently monitoring water quality</b>	July 2016 to June 2017	Meet with Kittitas County Water Purveyors and Ecology to coordinate activities as needed.
<b>Construct irrigation system conversion projects</b>	July 2016 to June 2017	Complete at least two projects to convert to sprinkler irrigation systems in high priority locations focused on water quality improvements.
<b>Upper Yakima Temperature TMDL</b>	July 2016 to June 2017	Participate in implementation of the Upper Yakima Temperature TMDL and participate in the Lower Kittitas Valley Temperature Reduction Work Group.
<b>Reduce Irrigation Induced Soil Erosion</b>	July 2017 to June 2017	Continue to implement PAM Cost Share Program utilizing funding from County, Conservation Commission and Special Assessment

### Priority: Fish & Wildlife

**Measurable Goal:** *By 2021, complete installation of approved fish screen and fish passage facilities for the identified high priority areas. By 2025, complete installation of approved fish screen and fish passage facilities for the identified medium priority areas.*

Milestones	Timeline	12 Month Actions
<b>Construct/install fish screen and fish passage projects</b>	July 2016 to June 2017	Remove fish passage barriers on Coleman Creek, Naneum Creek and Manastash Creek. Install fish screens on Parke Creek, Coleman Creek, and Naneum Creek. Plan projects on Parke, Caribou, Cooke, Coleman, Naneum, Whiskey, Currier and Dry Creeks.

<b>Participate in Naneum-Wilson- Cherry Watershed Assessment</b>	July 2016 to March 2017	Provide support to the Kittitas County Flood Control Zone District as they conduct a fish habitat and flood hazard assessment of the Naneum-Wilson-Cherry Watershed, including updating stream assessment data and investigating project opportunities that address multiple concerns.
<b>Sage Grouse and Rangelands</b>	July 2016 to June 2017	Monitor and promote Sage Grouse Initiative programs in cooperation with NRCS. Attend Shrub-Steppe Partnership meetings.

**Priority:** Development & Natural Resource Impacts

**Measurable Goal:** Continue to assess land use fragmentation & small parcel impact on natural resources in irrigated, non-irrigated, range and forestlands and provide information/education and small project education/technical assistance to up to 100 landowners per year.

<b>Milestones</b>	<b>Timeline</b>	<b>12 Month Actions</b>
<b>Assist Communities to become or maintain Firewise USA status.</b>	July 2016 to June 2017	Assist 15 established Firewise communities by conducting workshops and assist another 5 communities to become newly recognized as Firewise Communities.
<b>Assist Hidden/Valley Swauk Fire Adapted Community</b>	July 2016 to June 2017	Coordinate with agencies to promote how landowners can be resilient in a wildfire prone area.
<b>Voluntary Stewardship Program</b>	July 2016 to June 2017	Facilitate and lead the VSP Watershed Group to begin to assemble the VSP plan for the Upper Yakima and Alkali-Squilchuk watersheds. The Watershed Group will be assisted by a Technical Committee and supported by Kittitas County.
<b>Participate in Naneum-Wilson- Cherry Watershed Assessment</b>	July 2016 to March 2017	Provide support to the Kittitas County Flood Control Zone District as they conduct a fish habitat and flood hazard assessment of the Naneum-Wilson-Cherry Watershed, investigating project opportunities that address multiple concerns.

**Priority:** Soils

**Measurable Goal:** Maintain soil productivity and health to meet or exceed NRCS soil quality criteria.

<b>Milestones</b>	<b>Timeline</b>	<b>12 Month Actions</b>
<b>Offer agronomy expertise to local growers</b>	July 2016 to June 2017	Coordinate with NRCS for direct and individual communication between NRCS agronomist and growers interested in soil quality & health
<b>Reduce Irrigation Induced Soil Erosion</b>	July 2016 to June 2017	Continue to offer the PAM Cost Share program to growers to reduce soil erosion.
<b>Monitor Chlorophyll levels in Hay Crops</b>	July 2016 to June 2017	Support the efforts of the Organization of Kittitas County Timothy Hay Growers & Suppliers to monitor chlorophyll levels and utilize the data to make decisions regarding nutrient applications.

**Priority:** Range

**Measurable Goal:** By 2021, document positive trend (health) on rangeland in Kittitas County.

<b>Milestones</b>	<b>Timeline</b>	<b>12 Month Actions</b>
<b>Conduct Rangeland Monitoring</b>	July 2016 to June 2017	Support rangeland monitoring effort by WSU Extension (staff) by providing staff to assist with field work.
<b>Provide technical and financial assistance</b>	July 2016 to June 2017	Support NRCS and WSU Extension's efforts to provide technical & financial assistance to rangeland operators.

<b>Monitor Wild Horse Conservation Easement</b>	July 2016 to June 2017	Continue to conduct annual monitoring on Wild Horse Wind & Solar Facility lands, including photo-monitoring of springs developed for livestock.
---	------------------------	---

**Priority:** Forestry

**Measurable Goal:** By 2021, treat 3,000 acres of forestland to improve forest health and reduce wildland fire risks in Kittitas County.

<b>Milestones</b>	<b>Timeline</b>	<b>12 Month Actions</b>
<b>Complete fuels reduction projects private forestland</b>	July 2016 to June 2017	Enter into agreements with private landowners to complete projects to improve forest health and reduce wildland fire risks on 100 acres. Focus on Community projects that involve multiple landowners.
<b>Conduct forestry assessments</b>	July 2016 to June 2017	Assess 100 acres of private forestland with the assistance of DNR foresters. Assessments will focus on forest health and wildland fire risks.
<b>Support Development of Teanaway Community Forest Grazing Plan</b>	July 2016 to June 2017	Provide facilitation services to the Subcommittee working to develop a long range grazing plan for the Teanaway Community Forest.

**Priority:** Information - Education

**Measurable Goal:** Provide educational opportunities for students (K-12), landowners, land managers and the general public regarding natural resource priorities and improving landscape resiliency in Kittitas County

<b>Milestones</b>	<b>Timeline</b>	<b>12 Month Actions</b>
<b>Publish E-Newsletter</b>	July 2016 January 2017	Publish KCCD Newsletter Biannually
<b>Maintain and Update Website</b>	July 2016 to June 2017	Complete update to website so that it becomes a significant source of up to date technical and educational resources for landowners/managers.
<b>Offer Wheat Week Curriculum to local schools</b>	September 2016 to June 2017	Work with the Franklin Conservation District, who leads the implementation of Wheat Week across the state, so that it is offered to Kittitas County Schools.
<b>Participate in Ag Appreciation Week</b>	March 2017 to April 2017	Support WSU Extension Kittitas County as they organize and facilitate the Ag Appreciation Day for third graders at the Kittitas County Event Center.
<b>Provide KCCD Program Information to Stakeholder Groups</b>	July 2016 to June 2017	Present to Association of Kittitas County Hay Growers & Suppliers, Kittitas County Farm Bureau, Kittitas County Cattlemen, and other stakeholders as requested.
<b>Investigate Interest in "Kids in the Creek"</b>	July 2016 to June 2017	Work with local schools and volunteers to determine interest in conducting a "Kids in the Creek" event in Kittitas County.

**Priority:** KCCD Operations

**Measurable Goal:** Maintain staffing and technical capacity to deliver programs that meet the needs of landowners and resource users and sustain the reputation for being a locally led problem solving group

<b>Milestones</b>	<b>Timeline</b>	<b>12 Month Actions</b>
<b>Establish System of Rates &amp; Charges</b>	July 2016 to December 2016	Submit system of rates and charges to the Kittitas Board of County Commissioners (BOCC) for approval and participate in public hearings held by the BOCC.
<b>Complete Single Federal Audit</b>	July 2016 to Sept 2016	A single federal audit will occur due to the expenditure of federal funds in excess of \$750,000 in 2015.



<b>Complete staff training plans</b>	July 2016 to June 2017	Staff to complete Conservation Planner course, Certified Irrigation Designer course, ESRI on-line courses, construction/contract management courses and attend WADE.
<b>Conduct Election and Appointments for the Board of Supervisors</b>	November 2016 to March 2017	Conduct Board of Supervisor election per Washington State Conservation Commission guidelines.
<b>Good Governance</b>	July 2016 to June 2017	Achieve a high Good Governance (or equivalent) rating with the Washington State Conservation Commission.
<b>Emergency/Disaster Response Planning</b>	July 2016-December 2016	Complete KCCD response plan for emergency/disaster situations (e.g. flood or fire) and participated in the update of the Kittitas County Comprehensive Emergency Management Plan.
<b>Conservation Plant Sale</b>	July 2016 to December 2016	Research options to improve the Conservation Plant sale so that conservation grade trees/shrubs are available to local landowners.

### Staffing Needs

Maintain the following current positions (same position may have multiple abilities):

- District Manager
- Financial Manager
- GIS Specialist
- Project Manager
- Engineer
- Resource Technicians
- Conservation Planners
- Construction Observer
- Grant Writer
- Education/Outreach
- Contract Specialist
- Fuels Reduction Specialist
- Permit Specialist
- Riparian Restoration Specialist

Add the following positions or responsibilities (same position may have multiple abilities):

- Assistant District Manager
- Forester
- Meeting Facilitator

\*Some expertise may be secured using consulting services.

### Annual Budget Needs

- Summary of the annual budget needed to carry out the plan of the KCCD based on the above information.

Natural Resource Activity	Budget
<b>Water</b>	
Water Quality (meeting Water Clean Up Plan Goals)	\$ 49,915
Water Quantity (Meeting Instream Flow Goals)	\$ 85,500
Cost Share Programs - Irrigation system improvements	\$1,450,000
Cost Share Programs - Livestock and Range Practices	\$ 45,000
Direct Technical Assistance to Producers	\$ 153,000
Contingency Reserve	\$ 28,841
	<b>\$1,812,256</b>
<b>Fish &amp; Wildlife (Irrigated and Rangeland)</b>	
Fish Habitat Access & Restoration	\$1,375,550
Upland Wildlife Habitat Restoration	\$ 9,194
Cost Share Programs - Livestock and Range Practices	\$ 35,000
Direct Technical Assistance to Producers	\$ 117,600
Contingency Reserve	\$ 26,435
	<b>\$1,563,779</b>

<b>Forestry</b>	
Forest Health Improvements	\$ 17,870
Firewise USA Communities/Fire Adapted Communities	\$ 29,240
Wildland Fire Fuels Reduction Cost Share	\$ 250,000
Direct Technical Assistance to Landowners	\$ 48,000
Contingency Reserve	\$ 9,511
	<b>\$ 254,621</b>
<b>Education/Outreach</b>	
Youth Education Opportunities	\$ 22,374
Producer Workshops	\$ 4,281
Public Outreach	\$ 48,765
Contingency Reserve	\$ 3,771
	<b>\$ 79,191</b>
	<b>\$3,809,847</b>

<b>Object</b>	<b>Budget</b>
<b>Salaries &amp; Wages</b>	<b>\$ 377,445</b>
<b>Personnel Benefits</b>	<b>\$ 130,754</b>
<b>Supplies</b>	
Office & Operating Supplies	\$ 87,071
Fuel Consumed	\$ 8,600
Supplies Purchased for Resale	\$ 4,800
Small Tools & Minor Equipment	\$ 1,800
Repairs and Maintenance (Vehicles)	\$ 2,150
	<b>\$ 104,421</b>
<b>Services</b>	
Professional Services	\$ 281,100
Communication	\$ 4,550
Travel	\$ 8,000
Advertising	\$ 5,400
Insurance	\$ 11,618
Utilities	\$ 9,500
Property Taxes	\$ 7,357
Miscellaneous	\$ 26,766
Project Construction	\$ 946,318
	<b>\$1,300,609</b>
<b>Capital Facilities- Escrow Payments</b>	<b>\$ 48,060</b>
<b>Cost Share</b>	<b>\$1,780,000</b>
<b>Contingency Reserve</b>	<b>\$ 68,558</b>
	<b>\$3,809,847</b>

## Key Decision Makers

*The first and most important key decision maker is the landowner or land manager. Their management decisions affect the condition of natural resources on a daily basis. There are a multitude of other key decision makers who can affect regulations governing land management and resources and sources of funding to establish and maintain technical and financial assistance programs in Kittitas County. They are:*

- |   |   |   |
|---|---|---|
| <p><b><u>LOCAL</u></b></p> <ul style="list-style-type: none"> <li>▪ <b>City of Cle Elum</b>, Mayor Jay McGowan, 117 E First, Cle Elum WA 98922</li> </ul> | <ul style="list-style-type: none"> <li>▪ <b>Kittitas County</b><br/>Commissioner Paul Jewell,<br/>Commissioner Obie O'Brien<br/>Commissioner Laura Osiadacz<br/>205 W 5<sup>th</sup> Room 110,<br/>Ellensburg WA 98926</li> </ul> | <p><b><u>STATE</u></b></p> <ul style="list-style-type: none"> <li>▪ <b>13<sup>th</sup> Legislative District</b><br/>Senator Judy Warnick, 103 Irv Newhouse Bldg, PO Box 40413 Olympia, WA 98504-0413</li> </ul> |
|---|---|---|

- **13<sup>th</sup> Legislative District**  
Representative Tom Dent, 411 John L. O'Brien Bldg, PO Box 40600, Olympia WA 98504
  - **13<sup>th</sup> Legislative District**  
Representative Matt Manweller, 470 John L. O'Brien Bldg, P.O. Box 40600, Olympia, WA 98504-0600
  - **Washington Department of Agriculture**, Derek Sandison, Director, PO Box 42560, Olympia WA 98504-2560
  - **Washington State Conservation Commission**, Mark Clark, Executive Director, P.O. Box 47721, Olympia WA 98504-7721
  - **Washington Department of Ecology**, Maia Bellon, Director, P.O. Box 47600, Olympia, WA 98504-7600
  - **Washington Department of Fish & Wildlife**, Jim Unsworth, Director, 600 Capitol Way N., Olympia, WA 98501
  - **Washington Department of Natural Resources**, Peter Goldmark, Commissioner of Public Lands, 1111 Washington Street SE, MS 47001, Olympia, WA 98504
  - **Office of the Governor**, Governor Jay Inslee, PO Box 40002, Olympia, WA 98504
- REGIONAL/FEDERAL**
- **USDA Farm Service Agency**, Judy Olson, State Executive Director, 316 W. Boone Ave., Suite 568, Spokane, WA 99201-2350
  - **USDA Natural Resources Conservation Service**, Roylene Rides at the Door, State Conservationist, 316 W. Boone Ave., Suite 450, Spokane, WA 99201
  - **USDA Forest Service**, James M. Peña, Regional Forester, Pacific Northwest Region, 1220 SW Third Ave, Portland, OR 97204-3440
  - **US Army Corps of Engineers**, Muffy Walker, Chief, Seattle District Regulatory Branch, P.O. Box 3755, Seattle, WA 98124-3755
  - **US Bureau of Land Management**, Linda Clark, District Manager, Spokane District, 1103 N. Fancher Road, Spokane, WA 99212
  - **US Environmental Protection Agency**, Dennis McLerran, Regional Administrator, Region 10, 1200 Sixth Avenue, Seattle, WA 98101
  - **US Fish & Wildlife Service**, Jessica Gonzalez, Field Supervisor, Central Washington Field Office, 215 Melody Lane, Suite 103, Wenatchee WA 98801
  - **NOAA National Marine Fisheries Service**, F. Dale Bambrick, Eastern Washington Branch Chief, 304 South Water St # 201, Ellensburg, WA 98926
  - **Northwest Power and Conservation Council**, Tom Karier, Washington Council member, 668 Riverpoint Blvd, Spokane, WA 99202
  - **Northwest Power and Conservation Council**, Phil Rockefeller, Washington Council member, 924 Capitol Way S, Suite 105, Olympia, WA 98501
  - **Bonneville Power Administration**, Elliot Mainzer, Administrator, P.O. Box 3621, Portland, OR 97208-3621
- TRIBAL**
- **Confederated Tribes and Bands of the Yakama Nation**, Phil Rigdon, Deputy Director, Department of Natural Resources, PO Box 151, Toppenish, WA 98948
  - **Confederated Tribes and Bands of the Yakama Nation**, JoDe L. Goudy, Chairman, Yakama Tribal Council, PO Box 151, Toppenish, WA 98948
- NATIONAL**
- **US House of Representatives**, Representative Dave Reichert, 1730 Longworth Building Washington, DC 20515
  - **US Senate**, Senator Maria Cantwell, 717 Hart Senate Office Bldg Washington, DC 20510
  - **US Senate**, Senator Patty Murray, 173 Russell Senate Office Building Washington, D.C. 20510

**Washington Conservation Districts assisting land managers with their conservation choices**

