



5-Year Plan (2013 to 2018) North Yakima Conservation District



For More Information Contact: Michael Tobin, (509) 454-5736 ext 5, mike-tobin@conservewa.net

Organization of the North Yakima Conservation District

The North Yakima Conservation District (NYCD) is dedicated to maintaining North Yakima County's renewable natural resources. The District is composed of landowners, land occupiers, and concerned citizens who serve on NYCD's Board of Supervisors as volunteers. NYCD is bordered by the crest of the Cascade Mountains to the west and the Columbia River to the east with the Yakima County line and Ahtanum Ridge forming the northern and southern boundaries respectfully. The NYCD is a political subdivision of Washington State government organized under "Conservation District Law", RCW Title 89, Chapter 89.08.

Function of the North Yakima Conservation District

To make available technical, financial and educational resources, whatever their source, and focus or coordinate them so that they meet the needs of the local land manager with conservation and implementation of soil, water and related natural resource programs.

We Serve & Why

We serve: landowners, land users, land occupiers, the local community, stakeholders, natural resource users, governmental entities and interest groups within NYCD and partner with other entities on issues of regional and state-wide concern.

Why do we serve: to enhance, sustain and promote the wise use of natural resources; to achieve good stewardship of natural resources; to educate those we serve; and because NYCD willingly implements RCW 89.08.

Mission Statement of the North Yakima Conservation District

- To enhance and promote the wise use of natural resources; promote sustainable, profitable agriculture and improve the quality of life and culture in Yakima County by:
 - Encouraging good land stewardship through education, incentives, and quality technical assistance.
 - Support individual private property rights.
 - Building strong coalitions with other groups.
 - Including, but not limited to, government assistance as a valid conservation partner to agriculture, by providing quality, intelligent, technical assistance to cooperators and partners.

Vision of the North Yakima Conservation District

The vision of the North Yakima Conservation District is to benefit the public by working to sustain the economic viability and culture of those who use and enjoy the natural resources within the North Yakima Conservation District and to increase public awareness of district goals and objectives.

Values of the North Yakima Conservation District

The NYCD stands for: providing technical and financial opportunities, promoting cooperation with our partners, providing educational resources, operating under a voluntary/grass roots ideal, implementation of natural resource conservation, striving for the highest and best natural resource use, delivering resource conservation in all its forms, natural resource sustainability and honesty.

Natural Resource Data & Information:

- The North Yakima Conservation District will use all available peer-reviewed and best available data from a variety of sources, data sources include (but are not limited to):
 - NRCS resource data

- Local landowner expertise
 - Historical data
 - Steelhead Recovery Plan
 - Washington State Department of Ecology - 303d list
 - Yakima River Basin Water Enhancement Programs - Integrated Plan
 - Yakima County Flood Control Plan
 - Plans dealing with natural resource protection and use produced by local, State and Federal partners
-

Trends Impacting Conservation and Landowners in the North Yakima Conservation District (not inclusive)

1. State budget issues, decreased funding, states deficit
2. Agricultural vs. urban conflicts, increased pressure from development, restrictions, etc...
3. Fish and stream driven projects vs. resource need based projects
4. Increase need to be creative in developing funding sources for the District to operate
5. Water Quality mandates
6. Endangered Species Act issues
7. New water quality issues, AFO/CAFO, storm water management, etc...
8. Ability of NYCD to maintain a quality of service to it's customers
9. A broader impact from stakeholder groups with dissimilar or conflicting goals and strategies
10. Diminishing District involvement in federal programs (implementation)
11. Increased negative focus towards agricultural related issues
12. Districts' increased recognition in ability to address resource issues
13. Disconnection with partners in technical issues
14. Spending a disproportionate amount of time looking for funds rather than implementing projects
15. Water resource needs vs. water supply
16. Increasing regulatory issues (Shoreline Management, Critical Areas, etc...)
17. Increasing need for integrated pest management.
18. Loss of private property to public lands and non-profit organizations
19. Increased demand on natural resources
20. Media messaging toward preservation rather than conservation (non-use vs. wise use)

Strategies to Address Trends

Local, State and Federal funding issues: Participate in legislative activities that provide conservation related funding.

Water Resource and Water Quality related issues including ESA, Irrigation, and Municipal uses: Support water storage issues, assist landowners in meeting W/Q criteria and ESA requirements.

Customer Service issues: increase information and education outreach while maintaining a strong District implementation program(s).

Criteria for Selecting Conservation Priorities:

- Apparent resource concern identified by district staff or others.
- Willing cooperator.
- New regulatory actions that affect current cooperators.
- Future regulatory actions.
- Best use of available resources based on the judgment of the board.
- Future criteria will be based on program specific needs.

Priority Natural Resource Conservation Needs & Goals:

- Ag Preservation-Urban Interface-Land use planning.
 - By 2018, 5 landowners will be in a Conservation Easement with the NYCD
 - By 2018, NYCD will have a functioning Conservation Easement Program
 - Goal: establish a Conservation Easement Program, Manage over 10,000 acres within the program, Establish complimentary programs to move forward CE's with landowners
- Water Resources (Water Quality and Water Quantity)
 - By 2018, identify solutions for water quality impacts in all priority watersheds
 - By 2018, identify solutions for water quantity issues in all priority watersheds
 - Goal: establish functioning hydrograph in the Cowiche watershed through the use of the state's trust water program.
 - Goal: Develop, implement and move forward Watershed Plans that include water storage.
 - Goal: Develop the Voluntary Stewardship Program for Yakima County and begin implementation in the Wenas watershed covering $\frac{3}{4}$ of the identified critical areas within that watershed.
 - Goal: Develop and implement a District wide water quality monitoring program(s) that include/promotes individual farm monitoring elements (photo points, temp, notes).
- Fish and Wildlife
 - By 2018, assist affected landowners with compliance issues related to the Endangered Species Act and State requirements in NYCD priority watersheds
 - Goal: Complete all fish screening and barrier needs within all priority watersheds.
 - Goal: Develop a fully functioning habitat program to complete recovery needs within priority watersheds.
 - Goal: Be actively involved in all ESA issues to promote compliance with landowner uses.
 - Goal: Implement the WACD Wolf Position Paper
- Livestock Issues (AFO, CAO, and DNP)
 - By 2018, NYCD will develop programs and/or agreements to address livestock issues in NYCD priority watersheds
 - Goal: Develop the Voluntary Stewardship Program for Yakima County and begin implementation in the Wenas watershed covering $\frac{3}{4}$ of the identified critical areas within that watershed.
- Forestry
 - By 2018 Provide assistance to all private landowners with forest health needs
 - By 2018 fully implement a fuels reduction program with all private forest owners
 - Goal: Fully implement the fuels reduction program of the Highway 410/12 CWPP.
- Noxious Weeds and Pests
 - By 2018, Develop integrated pest management programs
 - Goal: Fully implement the "Apple Maggot Host Elimination" project with USDA-ARS, WSU Extension and Yakima County Horticultural Pest & Disease Board.
 - Goal: Work with Yakima County Weed Control Board to create programs that address common goals.
- Rangeland
 - By 2018, develop a rangeland program within NYCD priority watersheds
 - Goal: Develop firewise program for Rangeland landscapes.
 - Goal: Recognize importance and volume of private property on which wildlife habitat is provided.

Critical Geographic Priority Areas: (maps attached)

- Cowiche, Ahtanum, Naches/Tieton, Wenas, Moxee, and Wide Hollow Watersheds.

Information – Education Priorities and Goals:

- By 2018, increase the knowledge, understanding and awareness of district priorities, programs and actions with all landowners in the district and our partners.

District Operations Priorities and Goals:

- Maintain, expand and provide effective Natural Resource Conservation programs in an efficient, legal and fiscally responsible manner.

Land Manager Needs

- Information on how to be proactive on regulatory requirements, to include assistance with understanding appropriate practices, monitoring activities and options.
- Education on how to respond to regulatory actions.
- Increased awareness on district products and services.
- Incentive to implement conservation practices before being subject to regulation.
- District funding to support land manager needs.
- Maintain the districts position between the land manager and regulatory agencies.

Priority Actions – 12 Months (all actions are identified in NYCD's Annual Plan)

Actions	Begin Date	End Date
Ag Preservation-Urban Interface-Land use planning: Water Resources: Fish and Wildlife: AFO/CAFO: Forestry: Noxious Weeds and Pests: (focus areas: Irrigated Cropland and rangeland) Information/Education: District Operations:	See Annual Plan For dates	

Staffing Needs

In order to realize this 5-year plan NYCD proposes the following staffing needs:

- District Manager
 - Financial Manager
 - Information, Education and Outreach Coordinator / Promoter
 - Resource Biologist
 - Information/Technology/GIS technician
 - WCC Crew Coordinator/Plant Material Facility technician
 - Ag Preservation Specialist
 - Reception/Secretary/Bookkeeper
 - Resource Planners (4)
 - Engineer
 - Water Quality Technician
 - Work Crew (2, 6 member crews)
 - Attorney (legal representation)
-

Annual Budget Needs

In order to realize this 5-year plan NYCD proposes the following Zero Based annual budget (2013 dollars):

- Salary - \$1,303,400
 - District equipment - \$25,000
 - Office Supplies - \$10,000
 - Rent/Utilities - \$75,000
 - Vehicle - \$125,000
 - Programs/Cost Share - \$10,000,000
 - Training - \$50,000
 - Other - \$25,000
 - 5% of above - \$269,000
- Total Annual Budget = \$12,194,070.00
-

Key Decision Makers

- Elected officials (federal, State and local)
 - Conservation Commission Members and Staff
 - Washington Association of Conservation Districts and WACD Executive Director
 - Partner Entities (Natural Resource Conservation Service, Resource Conservation & Development Council, Department of Ecology, Bureau of Reclamation, United States Fish and Wildlife Service, Washington Department of Fish and Wildlife, WSU Extension, Yakama Nation, Federal, State, County and local government entities, including municipalities, etc...)
 - Stakeholder Groups (Washington State Cattleman's Associations, Hop Growers of Washington, Farm Bureau, Irrigation Districts, Dairy Federation, etc...)
 - Environmental Groups (Nature Conservancy, Rocky Mountain Elk Foundation, Pheasants Forever, Cowiche Canyon Conservancy, Shrub Steppe Partnership (Julie Connelly), etc...)
-

NYCD Watershed Priorities

List of resource concerns for the North Yakima Conservation District (In the following section, "use" means wise use/sustainable use, "protection" means respecting landowner needs with wise use, "enhancement" means meeting landowner needs with best management practices)

1. Improper land use practices (erosion related, public and private ownership, etc...)
2. Changing plant, grass and forest cover
3. Soil condition
4. Wind erosion
5. Air quality
6. Water erosion
7. Water quality
8. Agricultural land
use/protection/enhancement
9. Development land
use/protection/enhancement
10. Forest land
use/protection/enhancement
11. Flood plain
use/protection/enhancement
12. Rangeland use/protection/enhancement
13. Storm water (quality)
14. Flood water (quantity)
15. Riparian habitat
use/protection/enhancement
16. In stream habitat
use/protection/enhancement
17. Upland habitat(s) use /protection/
enhancement
18. Open space area(s)
use/protection/enhancement
19. Wildlife
20. Native plants
21. Resident and salmonid fisheries
22. Water quantity
23. Noxious Weeds
24. Reintroduction of native or
introduction of non-native species
(plant and animal)

Ahtanum Creek

1. 22 & 7
2. 8,9,10,11,12,23
3. 21,19 &24

Black Rock

1. 12 & 8
2. 4
3. 19
4. 24

Cold Creek

1. 12
2. 19
3. 13
4. 24

Cowiche Creek

1. 8 & 12, 23
2. 22 & 7
3. 1
4. 21,19, &24
5. 9

Moxee

1. 8,9 and 12
2. 5, 4, and 1
3. 7
4. 14, 15 and 16

Naches and Tieton

1. 14, 11, 9 and 15
2. 8 & 10, 23
3. 7 & 22
4. 19, 21,& 24

Selah

1. 9, 8 and 1
2. 7
3. 22
4. 21
5. 24

Selah Creek

1. 1 & 9
2. 12
3. 20
4. 24

Wenas Creek

1. 22, 7 and 15
2. 12, 1,2 & 24
3. 8,9, 10 and 1

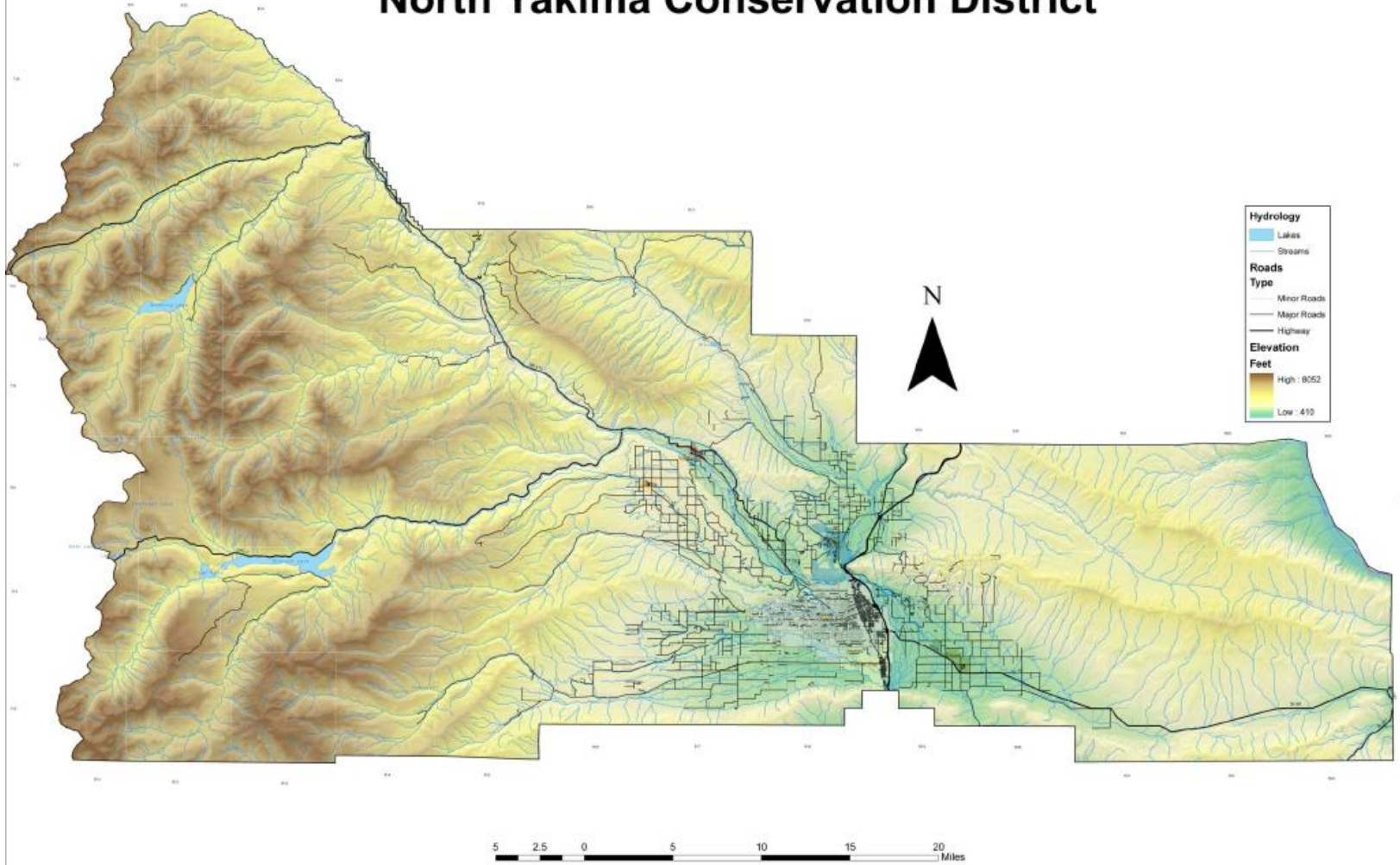
Wide Hollow Creek

1. 9 & 1
2. 15, 14 and 20
3. 7 & 22
4. 21

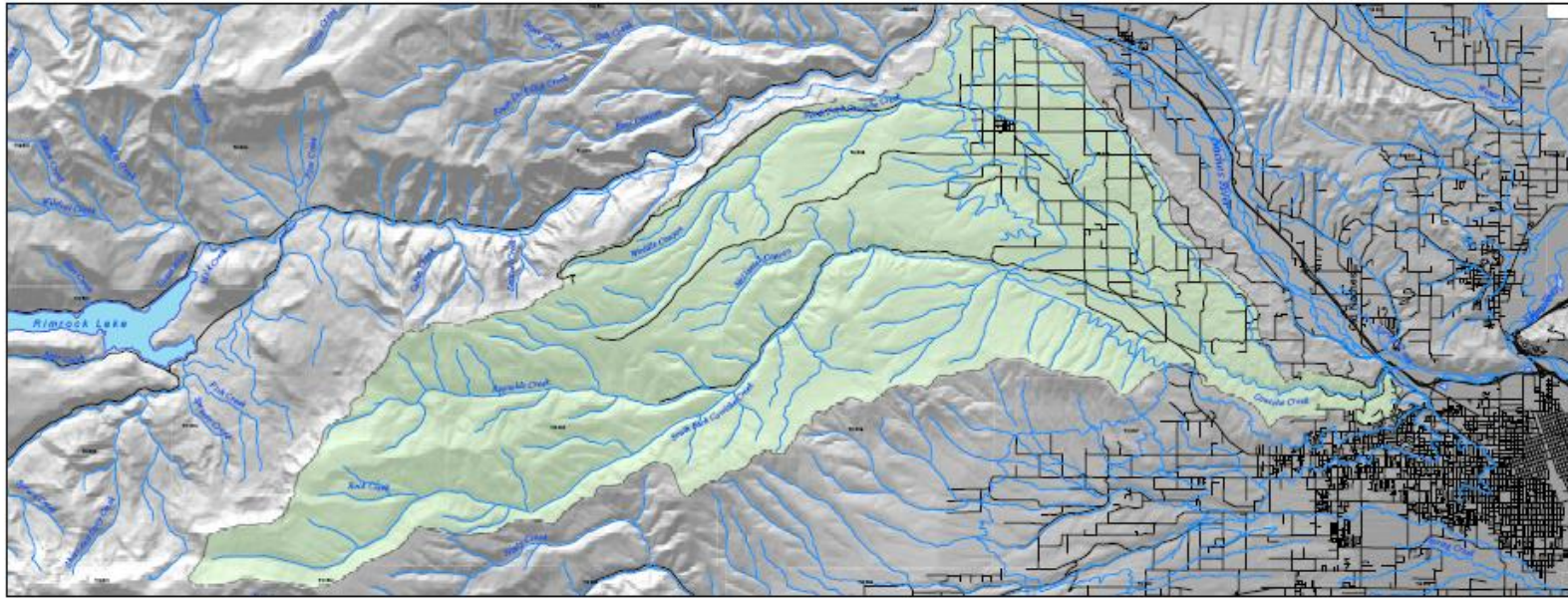
Yakima River Urban

1. 1 & 2
2. 7 & 22
3. 11 & 14
4. 5

North Yakima Conservation District

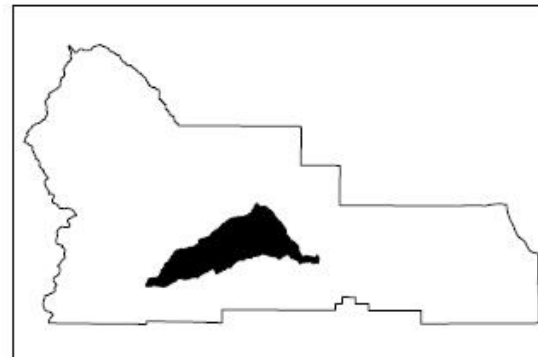


North Yakima Conservation District: Cowiche Creek Watershed

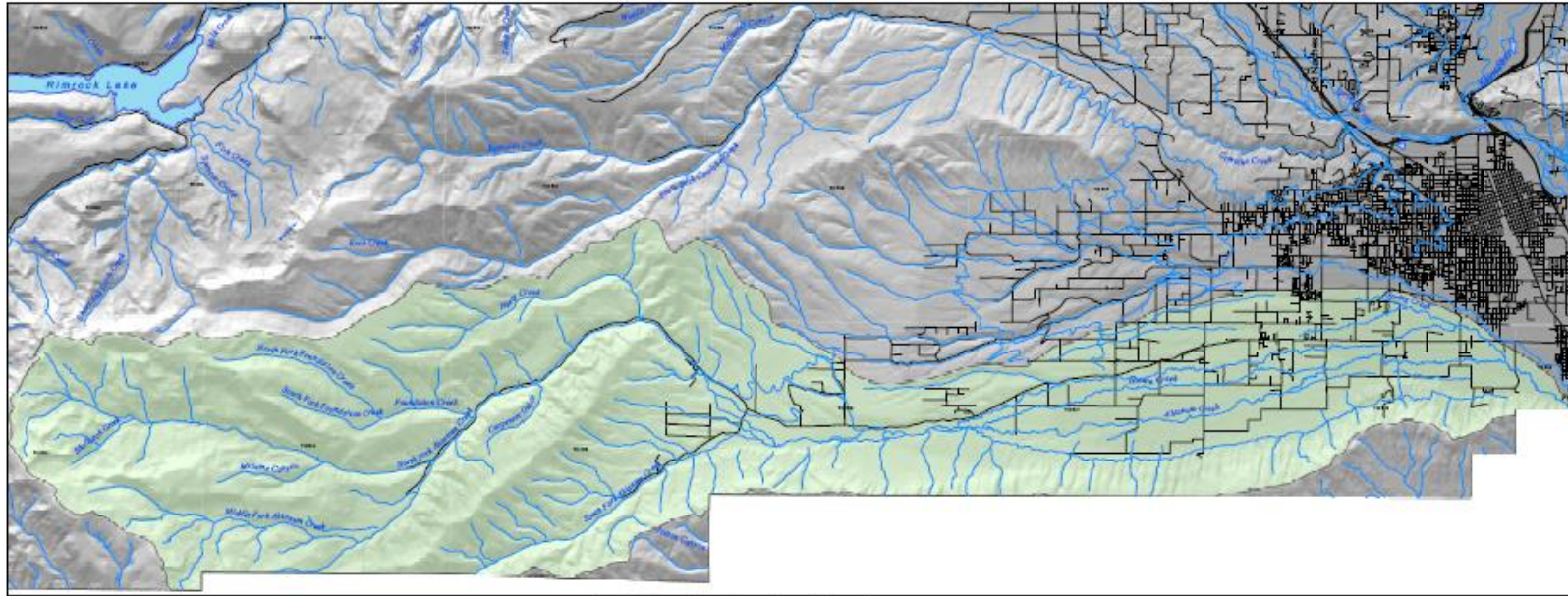


Hydrology	
	Lakes
	Streams

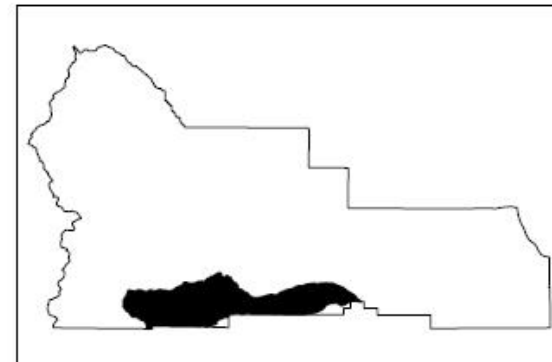
Roads	
Type	
	Minor Roads
	Major Roads
	Highway



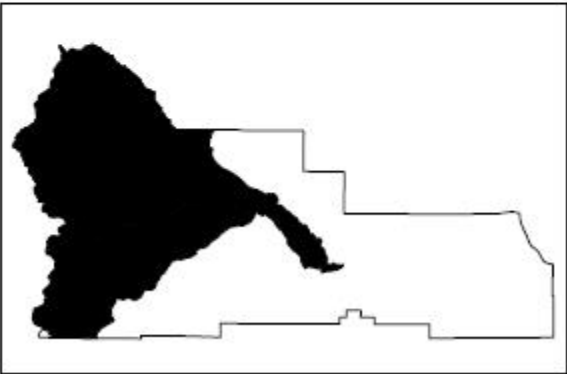
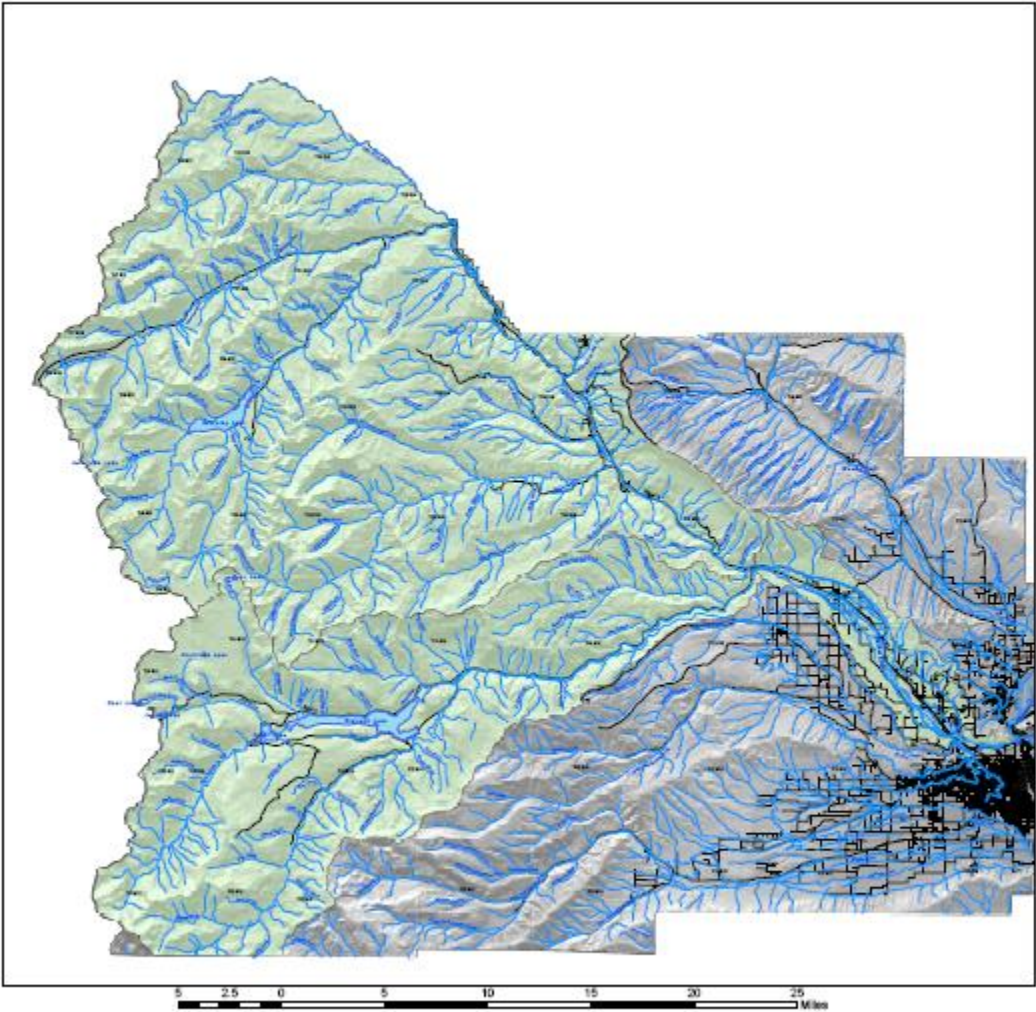
North Yakima Conservation District: Ahtanum Creek Watershed



Hydrology	
	Lakes
	Streams
Roads	
Type	
	Minor Roads
	Major Roads
	Highway



North Yakima Conservation District: Naches/Tieton Watershed



North Yakima Conservation District: Wide Hollow Creek Watershed

