



## 5-Year Plan (2013 to 2018) Kitsap Conservation District

For More Information Contact: Kitsap Conservation District,  
360-337-7171 or [kcd@wa.nacdnet.org](mailto:kcd@wa.nacdnet.org)



---

### Organization of the Kitsap Conservation District

A political subdivision of the State of Washington - authorities, powers and structure contained in RCW 89.08.

- The Kitsap Conservation District was formed in 1949.
- A five-member board of volunteer supervisors, three elected locally and two appointed by Washington State Conservation Commission, provides leadership to address local resource conservation issues.

---

### Function of the Kitsap Conservation District

To make available technical, financial, and educational resources, whatever their source, and focus or coordinate them so that they meet the needs of the local land manager with conservation of soil, water and related natural resources.

---

### Who We Serve & Why

The Kitsap Conservation District assists small farm owners in their maintenance and expansion of economically viable agriculture and in the conservation of natural resources. We do this by providing technical assistance and education which protects and improves the natural resources of Kitsap County to landowners, community groups and agencies.

---

### Mission of the Kitsap Conservation District

- The Kitsap Conservation District commits itself to:
    - *Guiding conservation without regulation*
    - *Educating by demonstration*
    - *Forming partnerships to accomplish more*
- We dedicate ourselves to involving the community in better farming practices and natural resource protection now and for the future.

---

### Vision of the Kitsap Conservation District

The vision of the District is to strengthen and promote natural resource stewardship, and to implement programs that will conserve agricultural and natural resources by providing technical assistance, incentive programs, and education to Kitsap landowners.

---

### Values of the Kitsap Conservation District

- Utilize a common sense approach to programs, projects, and partners.
  - Respect opinions and goals of Kitsap land managers.
  - Assist land managers in understanding and addressing natural resource issues.
  - Assist land managers in the use of conservation measures to improve water quality and habitat.
  - Create and sustain programs to advance agriculture in the county.
  - Provide services and implement conservation practices on a voluntary basis.
  - Serve as a liaison between the public and relevant agencies.
-

## **Natural Resource Priorities, Measures of Success, and Goals:**

### ***Maintain Kitsap Conservation District's partnerships with natural resource programs in the county.***

- Through 2018, KCD will be recognized as an agency for coordination of natural resource related activities in Kitsap County and will coordinate funding that is at an adequate level to complete the tasks needed.
- Maintain a long range approach of assistance to the Surface and Storm Water Management Program of Kitsap County and focus on agriculture, Low Impact Development, and habitat restoration.

### ***Provide technical assistance to private landowners for natural resource improvement***

- Through 2018, have effective programs to sustain agriculture and growth in the county while addressing wildlife, fish and water resource concerns.

### ***Improve Water Quality***

- Through 2018, assist Surface and Storm Water Management Programs and Kitsap Public Health District using cooperative efforts with program partners to improve all streams with significant development or agricultural activity.

### ***Assist landowners with solutions to farm water quality concerns.***

- Through 2018, identify and contact small farm owners and operators to educate them on the importance of proper management practices.

### ***Promote Agriculture***

- Through 2018, assist landowners so they might increase the number of economically viable farms in Kitsap. Kitsap Conservation District recognizes the importance of economically viable agriculture, and to that end, we will be a resource and adviser for maintaining viability of existing agriculture and assisting landowners with new farming ventures.

### ***Set an Example of Conservation***

Through 2018, Kitsap Conservation District will set an example of conservation in all areas of work by:

- Utilizing Low Impact Development methodologies to design, implement and install Best Management Practices.
- Practice water conservation and low 'Carbon Foot Print' methodologies in everyday practices of the District.
- Utilize Kitsap County Resolution No. 108 "Water as a Resource" as a guideline in planning and everyday practices.
- Be fiscally conservative with programs, recognizing the public support of the District through grants and other contracts.
- Demonstrate conservation and reuse/recycle methodologies in everyday practices.

---

## **Critical Geographic Areas (attached map)**

- Kitsap County has 228 miles of shoreline and near-shore habitat. This makes protection of water quality, quantity, and habitat a very high priority. It is critical to protect these areas, and Kitsap Conservation District will include this concern in all aspects of its outreach and education and technical assistance.

---

## **Information – Education Priorities, Measures of Success, and Goals:**

Increase public education/outreach programs to inform landowners and the public about the district and local issues.

- Create small farm, habitat restoration, and LID demonstration projects.
  - Regularly publish newsletters, web information and other media information.
  - Assist in public and school programs for water quality and natural resources.
  - Offer an annual native tree and plant sale.
-

## District Operations Priorities, Measures of Success, and Goals:

- Maintain stable funding sources and contracts
- Seek new opportunities for contracts and innovative grants.
- Maintain staff salaries/benefits commensurate with other conservation districts and public agencies.
- Provide training opportunities for Supervisors and staff.
- Complete effective and efficient operations including accounting, grant vouchering, personnel management, Supervisor elections & appointments, training & development, annual planning and reporting.

---

## Trends Impacting Conservation in the Kitsap Conservation District

**Trend:** Increased scrutiny on the management of water resources on and near agricultural lands.

**Strategy:** Provide technical assistance to landowners that addresses water quality. Encourage landowners to provide suitable habitat and open spaces within their own properties.

**Trend:** Constant pressure to develop open space, agricultural land and shoreline.

**Strategies:** Assist and encourage landowners to optimize production on existing natural resource lands and currently developed properties. Encourage LID practices to help mitigate impact on natural resources.

**Trend:** Increased demand for locally produced agricultural products.

**Strategies:**

- Assist landowners with development of agricultural products for local markets.
- Work with county government to create acknowledgement of agricultural land and incentives.

---

## Natural Resource Data:

KCD has updated watershed data for small farms throughout the entire county. This is a resource for future BMP focus as well as data that can be used for grants and emergency management.

---

## Staffing Needs

1 FTE District Coordinator

1 FTE District Financial & Technical Coordinator

0.5 FTE Administrative Assistant

5.75 FTE Planners

---

## Annual Budget Needs

Operating Budget Needs: To maintain existing programs, budget needs total \$1,082,300 in 2013 and will rise approximately 3% each year afterward to 2018.

---

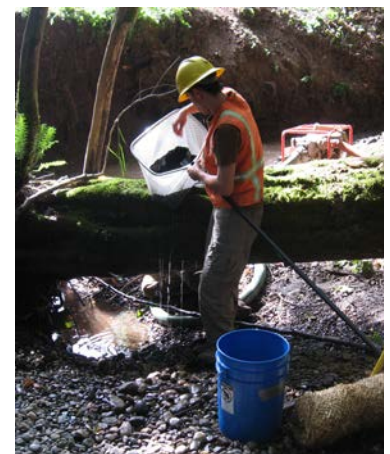
## Key Decision Makers

Citizens of Kitsap County

Kitsap Conservation District Board of Supervisors

Washington Association of Conservation Districts Board

Washington Conservation Commission



## Benchmarks, Timeline, & Actions

Strategic Priority:	Timeline	12 Month Actions/Measurable Goal:
LID program development	2013-2014	Work with SSWM program and WSCC to complete demonstrations of cisterns, pervious surface and other LID practices on farms and retrofit homes and businesses.
Increase working partnerships with Suquamish Tribe and local PUDs	2013-2018 Each Year	<ul style="list-style-type: none"> <li>• Plan with Tribe and PUDs on priority watershed work each year</li> <li>• Include Suquamish in Backyard Habitat program projects</li> </ul>
Farmland Preservation Efforts	2013-2014	<ul style="list-style-type: none"> <li>• 2013 -Discuss opportunities with county Department of Community Development (DCD) decision-makers for partnerships in Farmland Preservation as policy.</li> <li>• 2013 – Work with DCD to improve awareness of critical farmland in Kitsap County.</li> <li>• 2014 – Engage farming community activists, local jurisdictions and KCD in discussion on preservation.</li> </ul>
Homeland Security and Emergency Management	2013 - 2015	<ul style="list-style-type: none"> <li>• 2013 - Respond to RFP's for risk management.</li> <li>• 2013 through 2015 - Engage the farming community in e-prep to avoid FAD risk and aid in disaster assistance for farmers.</li> </ul>

Washington Conservation Districts assisting land Managers with their conservation choices

